

EngageNY Portal
Data Dictionary
August 5, 2013

Table of Contents

1.	Introduction	3
2.	Data Dictionary	5
2.1	Education Organization Family	5
2.1.1	StateEducationAgency	6
2.1.2	LocalEducationAgency	7
2.1.3	School	9
2.1.4	SchoolSessionAssociation	10
2.1.5	Student	11
2.1.6	StudentSchoolAssociation	13
2.1.7	StudentSectionAssociation	14
2.1.8	Parent	15
2.1.9	StudentParentAssociation	16
2.1.10	Staff	17
2.1.11	Teacher	18
2.1.12	TeacherSchoolAssociation	18
2.1.13	TeacherSectionAssociation	19
2.1.14	StaffEducationOrganizationAssociation	20
2.2	Master Schedule Family Conceptual Data Model	22
2.2.1	Section	23
2.2.2	Attendance	24
2.2.3	Session	25
2.2.4	Course	25
2.2.5	CourseOffering	26
2.2.6	Calendar Date	27
2.2.7	GradingPeriod	27
2.3	Academic Record Family Conceptual Data Model	29
2.3.1	StudentAcademicRecord	30
2.3.2	Grade	32
2.4	Assessment Family Conceptual Data Model	34
2.4.1	Assessment	35

2.4.2	<i>PerformanceLevelDescriptor</i>	36
2.4.3	<i>StudentAssessmentAssociation</i>	36
2.4.4	<i>StudentObjectiveAssessment</i>	38
2.4.5	<i>StudentAssessmentItem</i>	38
2.4.6	<i>ObjectiveAssessment</i>	39
2.4.7	<i>AssessmentItem</i>	40
2.4.8	<i>LearningObjective</i>	40
2.5	Program & Cohort Family Conceptual Data Model	42
2.5.1	<i>Cohort</i>	43
2.5.2	<i>StudentCohortAssociation</i>	43
3.	Enumerations.....	45
3.1	<i>AcademicSubjectType</i>	45
3.2	<i>AddressType</i>	45
3.3	<i>AssessmentReportingMethodType</i>	45
3.4	<i>AttendanceEventCategoryType</i>	46
3.5	<i>ContentStandardType</i>	46
3.6	<i>CountryCodeType</i>	46
3.7	<i>DisabilityType</i>	52
3.8	<i>ElectronicMailAddressType</i>	53
3.9	<i>EntryType</i>	53
3.10	<i>ExitWithdrawType</i>	53
3.11	<i>GenerationCodeSuffixType</i>	54
3.12	<i>GradeLevelType</i>	54
3.13	<i>GradeType</i>	55
3.14	<i>OldEthnicityType</i>	55
3.15	<i>OperationalStatusType</i>	55
3.16	<i>PerformanceBaseType</i>	55
3.17	<i>PersonalTitlePrefixType</i>	56
3.18	<i>RaceItemType</i>	56
3.19	<i>RelationType</i>	56
3.20	<i>SexType</i>	58
3.21	<i>StateAbbreviation</i>	58
3.22	<i>TermType</i>	59
3.23	<i>TelephoneNumberType</i>	60
4.	Years of data loaded	61

1. INTRODUCTION

The following document presents the data dictionary as implemented within the EngageNY Portal to be utilized by data dashboard applications. The purpose of this document is to describe the relationship between the inBloom data model and NYSED Level 2 data collection.

The data dictionary includes entities, elements and related enumerations that will be continuously revised as data elements are added or modified over time and incorporated within this “living document.” Updates will be published prior to major EngageNY Portal software releases.

Please note that each entity is accompanied by a description of the entity and corresponding elements. Valid values for each element are also included for reference. The entities are:

Education Organization Family

- StateEducationAgency
- LocalEducationAgency
- School
- SchoolSessionAssociation
- Student
- StudentSchoolAssociation
- StudentSectionAssociation
- Parent
- StudentParentAssociation
- Staff
- Teacher
- TeacherSchoolAssociation
- TeacherSectionAssociation
- StaffEducationOrganizationAssociation

Master Schedule Family

- Section
- Attendance
- Session
- Course
- CourseOffering
- Calendar Date
- GradingPeriod

Academic Record Family

- StudentAcademicRecord
- Grade

Assessment Family

- Assessment
- PerformanceLevelDescriptor
- StudentAssessmentAssociation
- StudentObjectiveAssessment

- StudentAssessmentItem
- ObjectiveAssessment
- AssessmentItem
- LearningObjective

Program & Cohort Family

- Cohort
- StudentCohortAssociation

2. DATA DICTIONARY

This section includes inBloom conceptual data models for the in scope data families.

2.1 Education Organization Family

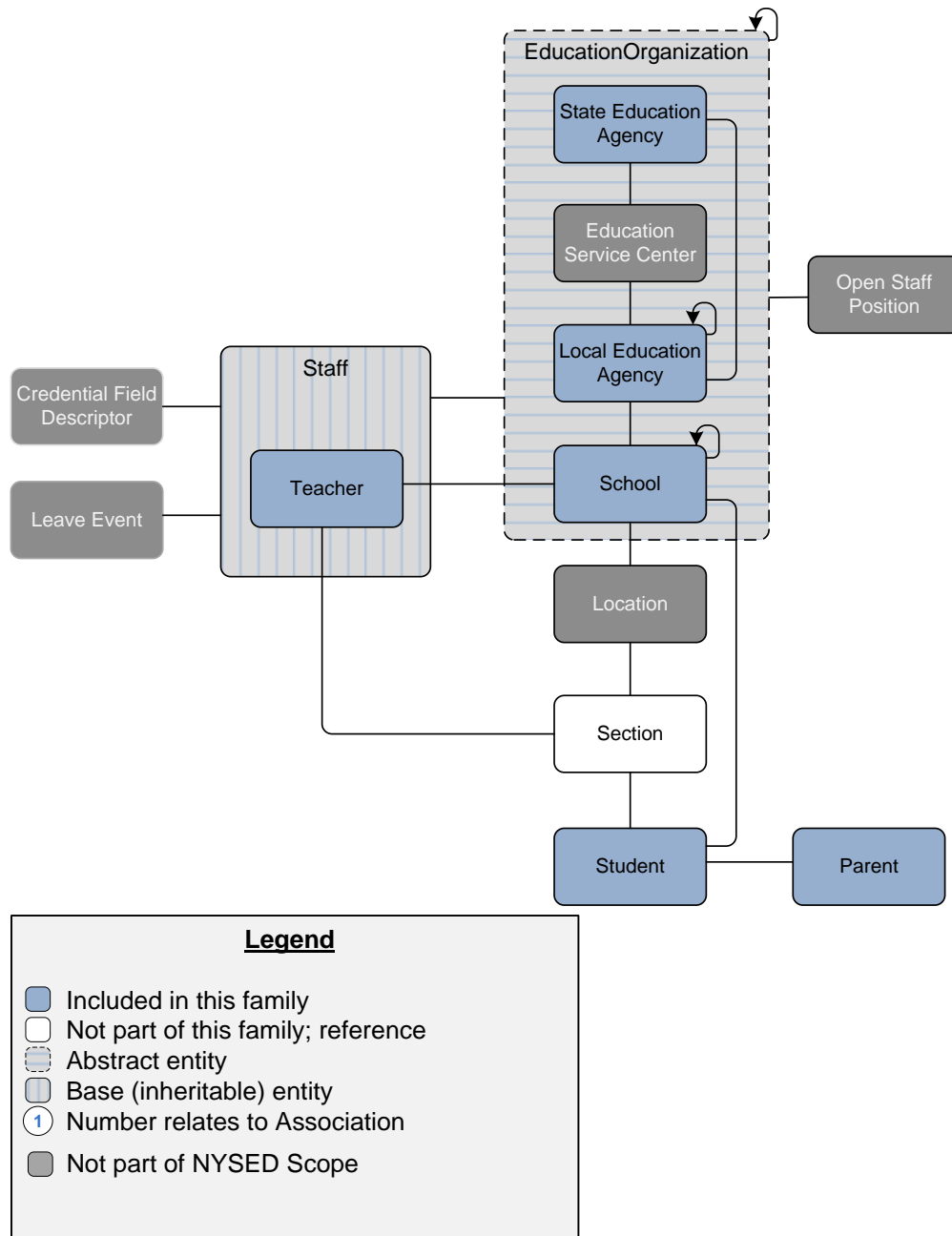


Figure 2.1 - Conceptual Data Model of Education Organization Family

2.1.1 StateEducationAgency

This entity represents the agency of the state charged with primary responsibility for coordinating and supervising public instruction, including the setting of standards for elementary and secondary instruction programs. The elements of this entity are:

StateEducationAgency			
Level	Element	Description	Required
1	Address	The set of elements that describes the physical location of the education entity, including the street address, city, state, ZIP code, and ZIP code + 4.	Required
2	addressType	The type of address listed for an individual or organization. For example: Physical Address, Mailing Address, Home Address, etc.) <i>For a list of valid values, see addressType in Enumerations Section.</i>	Optional
2	City	The name of the city in which an address is located.	Required
2	nameOfCounty	The name of the county, parish, borough, or comparable unit (within a state) in which an address is located.	Optional
2	postalCode	The five or nine digit zip code or overseas postal code portion of an address.	Required
2	stateAbbreviation	The abbreviation for the state (within the United States) or outlying area in which an address is located. <i>For a list of valid values see stateAbbreviation in Enumerations Section.</i>	Required
2	streetNumberName	The street number and street name or post office box number of an address.	Required
1	educationOrgIdentificationCode	A unique number or alphanumeric code assigned to an education organization by a school, school system, a state, or other agency or entity.	Optional
2	ID	A unique number or alphanumeric code that is assigned to an education organization by a school, school system, a state, or other agency or entity.	Required
1	identificationSystem	The school system, state, or agency assigning the identification code.	Required
1	nameOfInstitution	The full, legally accepted name of the institution.	Required

StateEducationAgency			
Level	Element	Description	Required
1	organizationCategories	The classification of the education agency within the geographic boundaries of a state according to the level of administrative and operational control granted by the state.	Required
1	shortNameOfInstitution	A short name for the institution.	Optional
1	stateOrganizationId	The identifier assigned to an education organization by the State Education Agency (SEA).	Required
2	educationOrgIdentificationCode	A unique number or alphanumeric code assigned to an education organization by a school, school system, a state, or other agency or entity.	Optional
3	ID	A unique number or alphanumeric code that is assigned to an education organization by a school, school system, a state, or other agency or entity.	Required
3	identificationSystem	The school system, state, or agency assigning the identification code.	Required
2	stateOrganizationId	The identifier assigned to an education organization by the State Education Agency (SEA).	Required

2.1.2 LocalEducationAgency

This entity represents an administrative unit at the local level which exists primarily to operate schools or to contract for educational services. It includes school districts, charter schools, charter management organizations, or other local administrative organizations.

LocalEducationAgency			
Level	Element	Description	Required
1	Address	The set of elements that describes the physical location of the education entity, including the street address, city, state, ZIP code, and ZIP code + 4.	Required
2	addressType	The type of address listed for an individual or organization. For example: Physical Address, Mailing Address, Home Address, etc.). <i>For a list of valid values see Addresstype in Enumerations Section.</i>	Optional
2	City	The name of the city in which an address is located.	Required

LocalEducationAgency			
Level	Element	Description	Required
2	nameOfCounty	The name of the county, parish, borough, or comparable unit (within a state) in which an address is located.	Optional
2	postalCode	The five or nine digit zip code or overseas postal code portion of an address.	Required
2	stateAbbreviation	The abbreviation for the state (within the United States) or outlying area in which an address is located. For a list of valid values see stateAbbreviationType in in Enumerations Section.	Required
2	streetNumberName	The street number and street name or post office box number of an address.	Required
1	educationOrgIdentificationCode	A unique number or alphanumeric code assigned to an education organization by a school, school system, a state, or other agency or entity.	Optional
2	ID	A unique number or alphanumeric code that is assigned to an education organization by a school, school system, a state, or other agency or entity.	Required
2	identificationSystem	The school system, state, or agency assigning the identification code.	Required
1	nameOfInstitution	The full, legally accepted name of the institution.	Required
1	operationalStatus	The current operational status of the education organization (e.g., active, inactive). For a list of valid values see OperationalStatusType in in Enumerations Section.	Optional
1	organizationCategories	The classification of the education agency within the geographic boundaries of a state according to the level of administrative and operational control granted by the state.	Required
1	shortNameOfInstitution	A short name for the institution.	Optional
1	stateOrganizationId	The identifier assigned to an education organization by the State Education Agency (SEA).	Required
1	parentEducationAgency	Reference to the parent Education Organization in a hierarchy.	
2	educationOrgIdentificationCode	A unique number or alphanumeric code assigned to an education organization by a school, school system, a state, or other agency or entity.	Optional
3	ID	A unique number or alphanumeric code that is assigned to an education organization by a school, school system, a state, or other agency or entity.	Required
3	identificationSystem	The school system, state, or agency assigning the identification code.	Required
2	stateOrganizationId	The identifier assigned to an education organization by the State Education Agency (SEA).	Required

2.1.3 School

This entity represents an educational organization that includes staff and students who participate in classes and educational activity groups.

School			
Level	Element	Description	Required
1	Address	The set of elements that describes the physical location of the education entity, including the street address, city, state, ZIP code, and ZIP code + 4.	Required
2	addressType	The type of address listed for an individual or organization. For example: Physical Address, Mailing Address, Home Address, etc.) For a list of valid values see <i>addressType</i> in Enumerations Section.	Optional
2	city	The name of the city in which an address is located.	Required
2	nameOfCounty	The name of the county, parish, borough, or comparable unit (within a state) in which an address is located.	Optional
2	postalCode	The five or nine digit zip code or overseas postal code portion of an address.	Required
2	stateAbbreviation	The abbreviation for the state (within the United States) or outlying area in which an address is located. For a list of valid values see <i>stateAbbreviationType</i> in Enumerations Section.	Required
2	streetNumberName	The street number and street name or post office box number of an address.	Required
1	educationOrgIdentificationCode	A unique number or alphanumeric code assigned to an education organization by a school, school system, a state, or other agency or entity.	Optional
2	ID	A unique number or alphanumeric code that is assigned to an education organization by a school, school system, a state, or other agency or entity.	Required
2	identificationSystem	The school system, state, or agency assigning the identification code.	Required
1	nameOfInstitution	The full, legally accepted name of the institution.	Required
1	operationalStatus	The current operational status of the education organization (e.g., active, inactive). For a list of valid values see <i>OperationalStatusType</i> in Enumerations Section.	Optional
1	organizationCategories	The classification of the education agency within the geographic boundaries of a state according to the level of administrative and operational control granted by the state.	Required
1	shortNameOfInstitution	A short name for the institution.	Optional
1	stateOrganizationId	The identifier assigned to an education organization by the State Education Agency (SEA).	Required
1	parentEducationAgency	Reference to the parent Education Organization in a hierarchy.	Optional
2	educationOrgIdentificationCode	A unique number or alphanumeric code assigned to an education organization by a school, school system, a state, or other agency or entity.	Optional
3	ID	A unique number or alphanumeric code that is assigned to an education organization by a school, school system, a state, or other agency or entity.	Required

School			
Level	Element	Description	Required
3	identificationSystem	The school system, state, or agency assigning the identification code.	Required
2	stateOrganizationId	The identifier assigned to an education organization by the State Education Agency (SEA).	Required
1	charterStatus	A school or agency providing free public elementary or secondary education to eligible students under a specific charter granted by the state legislature or other appropriate authority and designated by such authority to be a charter school.	Optional

2.1.4 SchoolSessionAssociation

This entity represents the association of a school with all its sessions.

SchoolSessionAssociation			
Level	Element	Description	Required
1	School	Reference to the school associated with the session.	Required
2	educationOrgId	A unique number or alphanumeric code assigned to an education organization by a school, school system, a state, or other agency or entity.	Optional
3	ID	A unique number or alphanumeric code that is assigned to an education organization by a school, school system, a state, or other agency or entity.	Required
3	identificationSystem	The school system, state, or agency assigning the identification code.	Required
2	stateOrganizationId	The identifier assigned to an education organization by the State Education Agency (SEA).	Required
1	Session	Reference to the session offered at the school.	Required
2	schoolYear	The identifier for the school year.	Required
2	sessionName	The identifier for the calendar for the academic session (e.g., 2010/11, 2011 Summer).	Required
2	Term	The term for the session during the school year.	Required
<i>For a list of valid values see TermType in Enumerations Section.</i>			

2.1.5 Student

This entity represents an individual for whom instruction, services and/or care are provided in an early childhood, elementary or secondary educational program under the jurisdiction of a school, education agency, or other institution or program. A student is a person who has been enrolled in a school or other educational institution.

Student			
Level	Element	Description	Required
1	birthData	The set of elements that capture relevant data regarding a person's birth, including birth date and place of birth.	Required
2	birthdate	The month, day, and year on which an individual was born.	Required
2	countryOfBirthCode	The unique two digit International Organization for Standardization (ISO) code for the country in which an individual is born. For a list of valid values see CountryCodeType in Enumerations Section.	Optional
2	dateEnteredUS	For students born outside of the US, the date the student entered the US.	Optional
1	cohortYears	The type and year of a cohort (e.g., 9th grade) the student belongs to as determined by the year that student entered a specific grade.	Optional
2	cohortYearType	The type of cohort year (9th grade, graduation)	Required
2	schoolYear	The value of the school year for the cohort.	Required
1	disabilities	The disability condition(s) that best describes an individual's impairment.	Optional
2	disability	A disability category that describes a child's impairment. For a list of valid values see DisabilityType in Enumerations Section.	Required
1	economicDisadvantaged	An indication of inadequate financial condition of an individual's family, as determined by family income, number of family members/dependents, participation in public assistance programs, and/or other characteristics considered relevant by federal, state, and local policy.	Optional
1	hispanicLatinoEthnicity	An indication that the individual traces his or her origin or descent to Mexico, Puerto Rico, Cuba, Central and South America, and other Spanish cultures, regardless of race. The term, "Spanish origin," can be used in addition to "Hispanic or Latino."	Required
1	homeLanguages	The language or dialect routinely spoken in an individual's home. This language or dialect may or may not be an individual's native language.	Optional
1	limitedEnglishProficiency	An indication that the student has been identified as limited English proficient by the Language Proficiency Assessment Committee (LPAC), or English proficient.	Optional
1	name	Full legal name of the person.	Required
2	firstName	A name given to an individual at birth, baptism, or during another naming ceremony, or	Required

Student			
Level	Element	Description	Required
		through legal change.	
2	lastName	The name borne in common by members of a family.	Required
2	middleName	A secondary name given to an individual at birth, baptism, or during another naming ceremony.	Optional
1	oldEthnicity	Previous definition of Ethnicity combining Hispanic/Latino and race: 1 - American Indian or Alaskan Native 2 - Asian or Pacific Islander 3 - Black, not of Hispanic origin 4 - Hispanic 5 - White, not of Hispanic origin. For a list of valid values see OldEthnicityType in Enumerations Section.	Optional
1	programParticipations	Key programs the student is participating in or receives services.	Optional
2	beginDate	The date the student was associated with the program or service.	Optional
2	endDate	The date the program participation ended.	Optional
2	program	The program the student is associated with or receiving services from.	Required
1	race	The general racial category which most clearly reflects the individual's recognition of his or her community or with which the individual most identifies. The way this data element is listed, it must allow for multiple entries so that each individual can specify all appropriate races. For a list of valid values see RaceItem in Enumerations Section.	Optional
1	schoolFoodServicesEligibility	An indication of a student's level of eligibility for breakfast, lunch, snack, supper, and milk programs.	Optional
1	section504Disabilities	A categorization of the disabilities associated with a student pursuant to Section 504.	Optional
1	sex	A person's gender. For a list of valid values see SexType in Enumerations Section.	Optional
1	studentCharacteristics	Reflects important characteristics of the student's home situation: such as Displaced Homemaker, Immigrant, Migratory, Military Parent, Pregnant Teen, Single Parent, Unaccompanied Youth, etc.	Optional
2	beginDate	The date the characteristic was designated.	Optional
2	characteristic	The characteristic designated for the student.	Required
2	endDate	The date the characteristic was removed.	Optional
1	studentIdentificationCode	A coding scheme that is used for identification and record-keeping purposes by schools, social services, or other agencies to refer to a student.	Optional
2	assigningOrganizationCode	The organization code or name assigning the student Identification Code.	Optional
2	identificationCode	A unique number or alphanumeric code assigned to a student by a school, school system, a state, or other agency or entity.	Required

Student			
Level	Element	Description	Required
2	identificationSystem	A coding scheme that is used for identification and record-keeping purposes by schools, social services, or other agencies to refer to a student.	Required
1	studentUniqueStateId	A unique number or alphanumeric code assigned to a student by a state education agency.	Required

2.1.6 StudentSchoolAssociation

This association represents the school to which a student is enrolled.

StudentSchoolAssociation			
Level	Element	Description	Required
1	entryDate	The month, day, and year on which an individual enters and begins to receive instructional services in a school.	Optional
1	entryGradeLevel	The grade level or primary instructional level at which a student enters and receives services in a school or an educational institution during a given academic session. For a list of valid values see GradeLevelType in Enumerations.	Required
1	entryType	The process by which a student enters a school during a given academic session For a list of valid values see EntryType in Enumerations Section.	Optional
1	exitWithdrawDate	The month, day, and year of the first day after the date of an individual's last attendance at a school (if known), the day on which an individual graduated, or the date on which it becomes known officially that an individual left school.	Optional
1	exitWithdrawType	The circumstances under which the student exited from membership in an educational institution. For a list of valid values see ExitWithdrawType in Enumerations Section.	Optional
1	School	School enrolling the student.	Required
2	educationOrgIdentificationCode	A unique number or alphanumeric code assigned to an education organization by a school, school system, a state, or other agency or entity.	Optional
3	ID	A unique number or alphanumeric code that is assigned to an education organization by a school, school system, a state, or other agency or entity.	Required
3	identificationSystem	The school system, state, or agency assigning the identification code.	Required
2	stateOrganizationId	The identifier assigned to an education organization by the State Education Agency (SEA).	Required
1	Student	Student enrolled in the school.	Required

StudentSchoolAssociation			
Level	Element	Description	Required
2	studentIdentificationCode	A coding scheme that is used for identification and record-keeping purposes by schools, social services, or other agencies to refer to a student.	Optional
3	assigningOrganizationCode	The organization code or name assigning the student Identification Code.	Optional
3	identificationCode	A unique number or alphanumeric code assigned to a student by a school, school system, a state, or other agency or entity.	Required
3	identificationSystem	A coding scheme that is used for identification and record-keeping purposes by schools, social services, or other agencies to refer to a student.	Required
2	studentUniqueStateId	A unique number or alphanumeric code assigned to a student by a state education agency.	Required

2.1.7 StudentSectionAssociation

This association indicates the course sections a student is assigned to.

StudentSectionAssociation			
Level	Element	Description	Required
1	beginDate	Month, day and year of the student's entry or assignment to the section. If blank, default is the start date of the first grading period.	Optional
1	endDate	Month, day, and year of the withdrawal or exit of the student from the section.	Optional
1	section	The section the student is enrolled in.	Required
2	uniqueSectionCode	A unique identifier for the section that is defined by the classroom, the subjects taught, and the instructors that are assigned.	Required
1	student	The student enrolled in the section.	Required
2	studentIdentificationCode	A coding scheme that is used for identification and record-keeping purposes by schools, social services, or other agencies to refer to a student.	Optional
3	assigningOrganizationCode	The organization code or name assigning the student Identification Code.	Optional
3	identificationCode	A unique number or alphanumeric code assigned to a student by a school, school system, a state, or other agency or entity.	Required
3	identificationSystem	A coding scheme that is used for identification and record-keeping purposes by schools, social services, or other agencies to refer to a student.	Required
2	studentUniqueStateId	A unique number or alphanumeric code assigned to a student by a state education agency.	Required

2.1.8 Parent

This entity represents a parent or guardian of a student, such as mother, father, or caretaker.

Parent			
Level	Element	Description	Required
1	Address	Parent's address, if different from student address.	Optional
2	addressType	The type of address listed for an individual or organization. For example: Physical Address, Mailing Address, Home Address, etc.) For a list of valid values see AddressType in Enumerations	Optional
2	city	The name of the city in which an address is located.	Required
2	nameOfCounty	The name of the county, parish, borough, or comparable unit (within a state) in which an address is located.	Optional
2	postalCode	The five or nine digit zip code or overseas postal code portion of an address.	Required
2	stateAbbreviation	The abbreviation for the state (within the United States) or outlying area in which an address is located. For a list of valid values see stateAbbreviation in Enumerations Section.	Required
2	streetNumberName	The street number and street name or post office box number of an address.	Required
1	electronicMail	The numbers, letters, and symbols used to identify an electronic mail (e-mail) user within the network to which the individual or organization belongs.	Optional
2	emailAddress	The electronic mail (e-mail) address listed for an individual or organization.	Required
2	emailAddressType	The type of email listed for an individual or organization. For example: Home/Personal, Work, etc.) For a list of valid values see ElectronicMailAddressType in Enumerations Section.	Optional
1	Name	Full legal name of the person.	Required
2	firstName	A name given to an individual at birth, baptism, or during another naming ceremony, or through legal change.	Required
2	generationCodeSuffix	An appendage, if any, used to denote an individual's generation in his family (e.g., Jr., Sr., III). For a list of valid values see GenerationCodeSuffixType in Enumerations Section.	Optional
2	lastName	The name borne in common by members of a family.	Required
2	middleName	A secondary name given to an individual at birth, baptism, or during another naming ceremony.	Optional
2	personalTitlePrefix	A prefix used to denote the title, degree, position or seniority of the person. For a list of valid values see PersonalTitlePrefixType in Enumerations Section.	Optional
1	parentUniqueStateId	A unique number or alphanumeric code assigned to a person.	Required

Parent			
Level	Element	Description	Required
1	Sex	A person's gender. For a list of valid values see SexType in Enumerations Section.	Optional
1	telephone	The 10-digit telephone number, including the area code, for the person.	Optional
2	telephoneNumber	The telephone number including the area code, and extension, if applicable.	Required
2	telephoneNumberType	The type of communication number listed for an individual or organization. For a list of valid values see TelephoneNumberType in Enumerations Section.	Optional

2.1.9 StudentParentAssociation

This association relates students to their parents, guardians, or caretakers.

StudentParentAssociation			
Level	Element	Description	Required
1	Relation	The nature of an individual's relationship to a student; for example: Father, Mother, Step Father, Step Mother, Foster Father, Foster Mother, Guardian, etc.. For a list of valid values see RelationType in Enumerations Section.	Optional
1	Parent	The parent or guardian of the student.	Required
2	parentUniqueStateId	A unique number or alphanumeric code assigned to a person.	Required
1	Student	The student.	Required
2	studentIdentificationCode	A coding scheme that is used for identification and record-keeping purposes by schools, social services, or other agencies to refer to a student.	Optional
3	assigningOrganizationCode	The organization code or name assigning the student Identification Code.	Optional
3	identificationCode	A unique number or alphanumeric code assigned to a student by a school, school system, a state, or other agency or entity.	Required
3	identificationSystem	A coding scheme that is used for identification and record-keeping purposes by schools, social services, or other agencies to refer to a student.	Required
2	studentUniqueStateId	A unique number or alphanumeric code assigned to a student by a state education agency.	Required

2.1.10 Staff

This entity represents an individual who performs specified activities for any public or private education institution or agency that provides instructional and/or support services to students or staff at the early childhood level through high school completion. For example, this includes:

- 1) an "employee" who performs services under the direction of the employing institution or agency, is compensated for such services by the employer, and is eligible for employee benefits and wage or salary tax withholdings;
- 2) a "contractor" or "consultant" who performs services for an agreed upon fee, or an employee of a management service contracted to work on site;
- 3) a "volunteer" who performs services on a voluntary and uncompensated basis;
- 4) an in kind service provider; or
- 5) an independent contractor or businessperson working at a school site.

Staff			
Level	Element	Description	Required
1	Name	Full legal name of the person.	Required
2	firstName	A name given to an individual at birth, baptism, or during another naming ceremony, or through legal change.	Required
2	lastName	The name borne in common by members of a family.	Required
2	middleName	A secondary name given to an individual at birth, baptism, or during another naming ceremony.	Optional
1	Sex	A person's gender. For a list of valid values see SexType in Enumerations Section.	Optional
1	staffIdentificationCode	A unique number or alphanumeric code assigned to a staff member by a school, school system, a state, or other agency or entity.	Optional
2	assigningOrganizationCode	The organization code or name assigning the student Identification Code.	Optional
2	identificationCode	A unique number or alphanumeric code assigned to a student by a school, school system, a state, or other agency or entity.	Required
2	identificationSystem	A coding scheme that is used for identification and record-keeping purposes by schools, social services, or other agencies to refer to a student.	Required
1	staffUniqueStateId	A unique number or alphanumeric code assigned to a staff by a state education agency.	Required

2.1.11 Teacher

This entity represents a person that is employed by an LEA or other educational unit engaged in student instruction. These persons are instructional-type staff members. In the data model, a teacher entity is a staff member with additional properties.

Teacher			
Level	Element	Description	Required
1	Name	Full legal name of the person.	Required
2	firstName	A name given to an individual at birth, baptism, or during another naming ceremony, or through legal change.	Required
2	lastName	The name borne in common by members of a family.	Required
2	middleName	A secondary name given to an individual at birth, baptism, or during another naming ceremony.	Optional
1	Sex	A person's gender. For a list of valid values see SexType in Enumerations Section	Optional
1	staffIdentificationCode	A unique number or alphanumeric code assigned to a staff member by a school, school system, a state, or other agency or entity.	Optional
2	assigningOrganizationCode	The organization code or name assigning the student Identification Code.	Optional
2	identificationCode	A unique number or alphanumeric code assigned to a student by a school, school system, a state, or other agency or entity.	Required
2	identificationSystem	A coding scheme that is used for identification and record-keeping purposes by schools, social services, or other agencies to refer to a student.	Required
1	staffUniqueStateId	A unique number or alphanumeric code assigned to a staff by a state education agency.	Required
1	teacherUniqueStateId	An ID number maintained by the state that uniquely identifies this teacher.	Optional

2.1.12 TeacherSchoolAssociation

This association indicates the school(s) to which a teacher provides instructional services to.

TeacherSchoolAssociation			
Level	Element	Description	Required
1	programAssignment	The name of the program for which the individual is assigned; for example: Regular education Title I-Academic Title I-Non-Academic Special Education Bilingual/English as a Second Language	Required

TeacherSchoolAssociation			
Level	Element	Description	Required
1	School	The school where the teacher provides services.	Required
2	educationOrgIdentificationCode	A unique number or alphanumeric code assigned to an education organization by a school, school system, a state, or other agency or entity.	Optional
3	ID	A unique number or alphanumeric code that is assigned to an education organization by a school, school system, a state, or other agency or entity.	Required
3	identificationSystem	The school system, state, or agency assigning the identification code.	Required
2	stateOrganizationId	The identifier assigned to an education organization by the State Education Agency (SEA).	Required
1	Teacher	The teacher providing services to the school.	Required
2	staffIdentificationCode	A unique number or alphanumeric code assigned to a staff member by a school, school system, a state, or other agency or entity.	Optional
3	assigningOrganizationCode	The organization code or name assigning the student Identification Code.	Optional
3	identificationCode	A unique number or alphanumeric code assigned to a student by a school, school system, a state, or other agency or entity.	Required
3	identificationSystem	A coding scheme that is used for identification and record-keeping purposes by schools, social services, or other agencies to refer to a student.	Required
2	staffUniqueStateId	A unique number or alphanumeric code assigned to a staff by a state education agency.	Required
2	teacherUniqueStateId	An ID number maintained by the state that uniquely identifies this teacher.	Optional

2.1.13 TeacherSectionAssociation

This association indicates the class sections to which a teacher is assigned to.

TeacherSectionAssociation			
Level	Element	Description	Required
1	beginDate	Month, day and year of a teacher's assignment to the section. If blank, defaults to the first day of the first grading period for the section.	Optional
1	classroomPosition	The type of position the staff member holds in the specific class/section; for example: Teacher of Record, Assistant Teacher, Support Teacher, Substitute Teacher...	Required
1	endDate	Month, day and year of the last day of a teacher's assignment to the section.	Optional

TeacherSectionAssociation			
Level	Element	Description	Required
1	Section	The section the teacher is assigned to.	Required
2	uniqueSectionCode	A unique identifier for the section that is defined by the classroom, the subjects taught, and the instructors that are assigned.	Required
1	Teacher	The teacher assigned to the section.	Required
2	staffIdentificationCode	A unique number or alphanumeric code assigned to a staff member by a school, school system, a state, or other agency or entity.	Optional
3	assigningOrganizationCode	The organization code or name assigning the student Identification Code.	Optional
3	identificationCode	A unique number or alphanumeric code assigned to a student by a school, school system, a state, or other agency or entity.	Required
3	identificationSystem	A coding scheme that is used for identification and record-keeping purposes by schools, social services, or other agencies to refer to a student.	Required
2	staffUniqueStateId	A unique number or alphanumeric code assigned to a staff by a state education agency.	Required
2	teacherUniqueStateId	An ID number maintained by the state that uniquely identifies this teacher.	Optional

2.1.14 StaffEducationOrganizationAssociation

This association indicates the education organization an employee, contractor, volunteer or other service provider is formally associated with, typically indicated by which organization the staff member has a services contract with or receives their compensation.

StaffEducationOrganizationAssociation			
Level	Element	Description	Required
1	beginDate	Month, day and year of the start or effective date of a staff member's employment, contract or relationship with the LEA.	Required
1	endDate	Month, day and year of the end or termination date of a staff member's employment, contract or relationship with the LEA.	Optional
1	staffClassification	The titles of employment, official status, or rank of education staff.	Required
1	educationOrganization	The educational organization to which the staff member provides services	Required
2	educationOrgIdentificationCode	A unique number or alphanumeric code assigned to an education organization by a school, school system, a state, or other agency or entity.	Optional
3	ID	A unique number or alphanumeric code that is assigned to an education organization by a school, school system, a state, or other agency or entity.	Required
3	identificationSystem	The school system, state, or agency assigning the identification code.	Required

StaffEducationOrganizationAssociation			
Level	Element	Description	Required
2	stateOrganizationId	The identifier assigned to an education organization by the State Education Agency (SEA).	Required
1	Staff	The staff assigned to the education organization.	Required
2	staffIdentificationCode	A unique number or alphanumeric code assigned to a staff member by a school, school system, a state, or other agency or entity.	Optional
3	assigningOrganizationCode	The organization code or name assigning the student Identification Code.	Optional
3	identificationCode	A unique number or alphanumeric code assigned to a student by a school, school system, a state, or other agency or entity.	Required
3	identificationSystem	A coding scheme that is used for identification and record-keeping purposes by schools, social services, or other agencies to refer to a student.	Required
2	staffUniqueStateId	A unique number or alphanumeric code assigned to a staff by a state education agency.	Required
2	endDate	The month, day, and year on which a contract between an individual and a governing authority ends or is terminated under the provisions of the contract (or the date on which the agreement is made invalid).	Optional

2.2 Master Schedule Family Conceptual Data Model

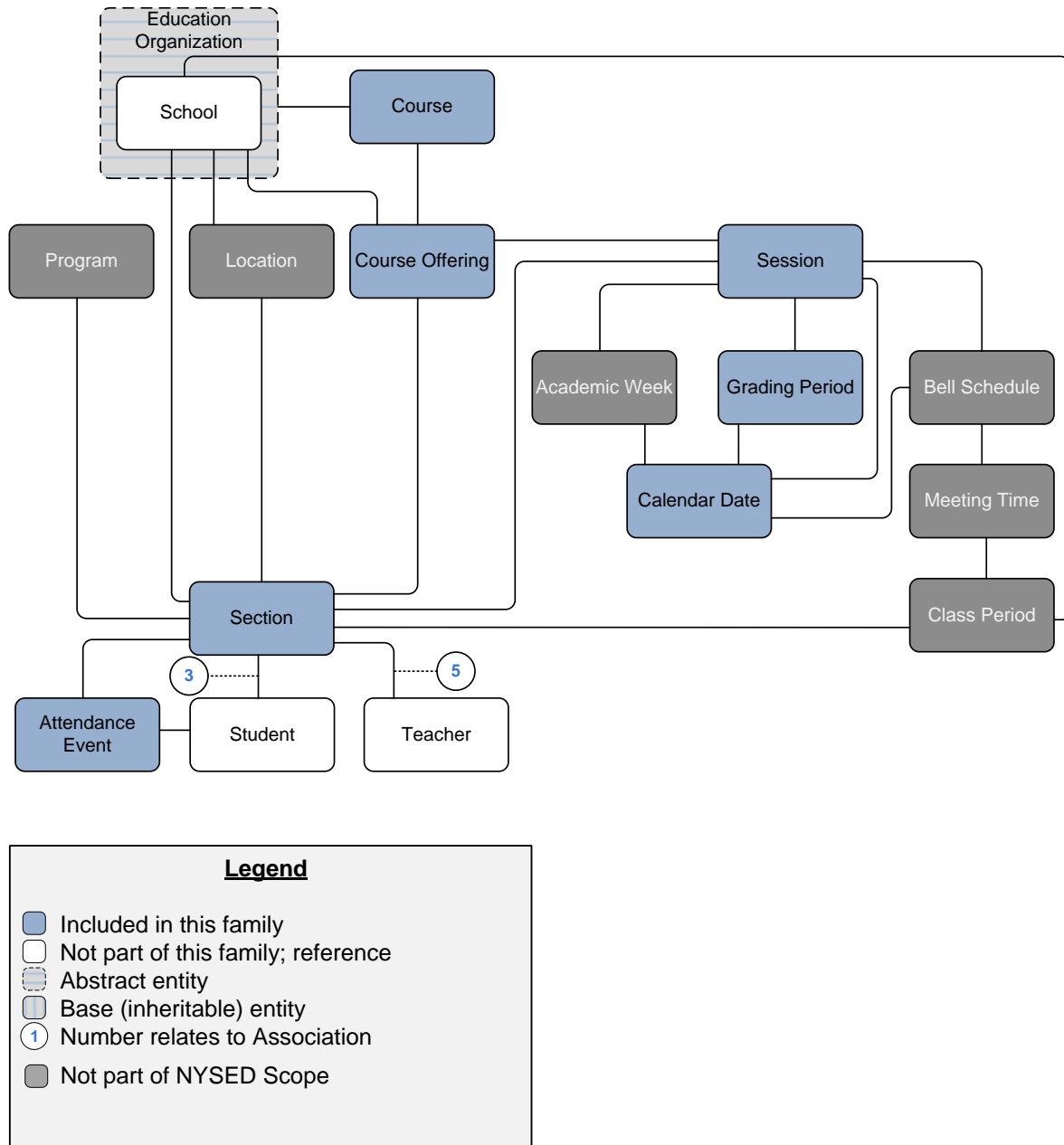


Figure 2.2 - Conceptual Data Model of Master Schedule Family

2.2.1 Section

This educational entity represents a setting in which organized instruction of course content is provided to one or more students for a given period of time. A course may be offered to more than one class/section. Instruction, provided by one or more teachers or other staff members, may be delivered in person or via a different medium.

Section			
Level	Element	Description	Required
1	uniqueSectionCode	A unique identifier for the section that is defined by the classroom, the subjects taught, and the instructors that are assigned.	Required
1	Course	The course associated with the section. This reference is required.	Required
2	assigningOrganizationCode	The organization code or name assigning the staff Identification Code.	Optional
2	ID	A unique number or alphanumeric code assigned to a course by a school, school system, a state, or other agency or entity. For multi-part course codes, concatenate the parts separated by a "/". For example, consider the following SCED code: subject = 20 Math course = 272 Geometry level = G General credits = 1.00 course sequence 1 of 1 would be entered as 20/272/G/1.00/1 of 1	Required
2	identificationSystem	A system that is used to identify the organization of subject matter and related learning experiences provided for the instruction of students.	Required
1	School	The school where the section is taught.	Required
2	educationOrgIdentificationCode	A unique number or alphanumeric code assigned to an education organization by a school, school system, a state, or other agency or entity.	Optional
3	ID	A unique number or alphanumeric code that is assigned to an education organization by a school, school system, a state, or other agency or entity.	Required
3	identificationSystem	The school system, state, or agency assigning the identification code.	Required
2	stateOrganizationId	The identifier assigned to an education agency by the State Education Agency (SEA). Also known as the State LEA ID.	Required
1	Session	The session associated with the section. This reference is required.	Optional
2	schoolYear	The identifier for the school year.	Required
2	sessionName	The identifier for the calendar for the academic session (e.g., 2010/11, 2011 Summer).	Required
2	term	The term for the session during the school year. <i>For a list of valid values see TermType in in Enumerations Section.</i>	Required

2.2.2 Attendance

This event entity represents the recording of whether a student is in attendance for a class or in attendance to receive or participate in program services.

Attendance			
Level	Element	Description	Required
1	schoolYearAttendance		Optional
2	attendanceEvent		Optional
3	date	Date for this attendance event.	Required
3	event	A code describing the attendance event, for example: present Unexcused absence Excused absence Tardy [A code categorizing the attendance event (e.g., excused absence, unexcused absence)] For a list of valid values see AttendanceEventCategory in Enumerations Section.	Required
3	reason	The reported reason for a student's absence. [The reason for the absence or tardy.]	Optional
2	schoolYear		Required
1	School	The school associated with this attendance.	Required
2	educationOrgIdentificationCode	A unique number or alphanumeric code assigned to an education organization by a school, school system, a state, or other agency or entity.	Optional
3	ID	A unique number or alphanumeric code that is assigned to an education organization by a school, school system, a state, or other agency or entity.	Required
3	identificationSystem	The school system, state, or agency assigning the identification code.	Required
2	stateOrganizationId	The identifier assigned to an education organization by the State Education Agency (SEA).	Required
1	Student	The student associated with this attendance.	Required
2	studentIdentificationCode	A coding scheme that is used for identification and record-keeping purposes by schools, social services, or other agencies to refer to a student.	Optional
3	assigningOrganizationCode	The organization code or name assigning the student Identification Code.	Optional
3	identificationCode	A unique number or alphanumeric code assigned to a student by a school, school system, a state, or other agency or entity.	Required
3	identificationSystem	A coding scheme that is used for identification and record-keeping purposes by schools, social services, or other agencies to refer to a student.	Required
2	studentUniqueStateId	A unique number or alphanumeric code assigned to a student by a state education agency.	Required

2.2.3 Session

This entity represents the prescribed span of time when an education institution is open, instruction is provided, and students are under the direction and guidance of teachers and/or education institution administration. A session may be interrupted by one or more vacations.

Session			
Level	Element	Description	Required
1	beginDate	Month, day and year of the first day of the session.	Required
1	endDate	Month, day and year of the last day of the session.	Required
1	schoolYear	The identifier for the school year.	Required
1	sessionName	The identifier for the calendar for the academic session (e.g., 2010/11, 2011 Summer).	Required
1	Term	The term for the session during the school year. For a list of valid values see TermType in in Enumerations Section.	Required
1	totalInstructionalDays	The total number of instructional days in the school calendar.	Required
1	gradingPeriods	The grading periods that take place during the session.	Required
2	beginDate	Month, day, and year of the first day of the grading period.	Required
2	endDate	Month, day, and year of the last day of the grading period.	Required
2	gradingPeriod	The name of the period for which grades are reported	Required

2.2.4 Course

This educational entity represents the organization of subject matter and related learning experiences provided for the instruction of students on a regular or systematic basis.

Course			
Level	Element	Description	Required
1	courseCode	The code that identifies the organization of subject matter and related learning experiences provided for the instruction of students.	Required
2	ID	A unique number or alphanumeric code assigned to a course by a school, school system, a state, or other agency or entity. For multi-part course codes, concatenate the parts separated by a "/". For example, consider the following SCED code: subject = 20 Math course = 272 Geometry level = G General credits = 1.00 course sequence 1 of 1 would be	Required

Course			
Level	Element	Description	Required
		entered as 20/272/G/1.00/1 of 1	
2	identificationSystem	A system that is used to identify the organization of subject matter and related learning experiences provided for the instruction of students.	Required
1	courseDefinedBy	Specifies whether the course was defined by the SEA, LEA, School, or national organization.	Optional
1	courseTitle	The descriptive name given to a course of study offered in a school or other institution or organization. In departmentalized classes at the elementary, secondary, and postsecondary levels (and for staff development activities), this refers to the name by which a course is identified (e.g., American History, English III). For elementary and other non-departmentalized classes, it refers to any portion of the instruction for which a grade or report is assigned (e.g., reading, composition, spelling, and language arts).	Required
1	subjectArea	The intended major subject area of the course. For a list of valid values see AcademicSubjectType in Enumerations Section.	Optional
1	School	The Education Organization that defines the curriculum and courses offered - often the LEA or school.	Required
2	educationOrgIdentificationCode	A unique number or alphanumeric code assigned to an education organization by a school, school system, a state, or other agency or entity.	Optional
3	ID	A unique number or alphanumeric code that is assigned to an education organization by a school, school system, a state, or other agency or entity.	Required
3	identificationSystem	The school system, state, or agency assigning the identification code.	Required
2	stateOrganizationId	The identifier assigned to an education organization by the State Education Agency (SEA).	Required

2.2.5 CourseOffering

This entity represents an offering of a course by school during a session, representing the course catalog of available courses.

CourseOffering			
Level	Element	Description	Required
1	localCourseCode	The local code assigned by the School that identifies the course offering provided for the instruction of students.	Required
1	localCourseTitle	The descriptive name given to a course of study offered in the school, if different from the CourseTitle.	Optional

CourseOffering			
Level	Element	Description	Required
1	Course	Reference to the course that is offered.	Required
2	courseCode	The code that identifies the organization of subject matter and related learning experiences provided for the instruction of students.	Required
3	assigningOrganizationCode	The organization code or name assigning the staff Identification Code.	Optional
3	ID	A unique number or alphanumeric code assigned to a course by a school, school system, a state, or other agency or entity. For multi-part course codes, concatenate the parts separated by a "/". For example, consider the following SCED code: subject = 20 Math course = 272 Geometry level = G General credits = 1.00 course sequence 1 of 1 would be entered as 20/272/G/1.00/1 of 1	Required
3	identificationSystem	A system that is used to identify the organization of subject matter and related learning experiences provided for the instruction of students.	Required
1	Session	Reference to the session the course is offered.	Required
2	schoolYear	The identifier for the school year.	Required
2	sessionName	The identifier for the calendar for the academic session (e.g., 2010/11, 2011 Summer).	Required
2	term	The term for the session during the school year. <i>For a list of valid values see TermType in in Enumerations Section.</i>	Required

2.2.6 Calendar Date

This entity represents a day in the school calendar.

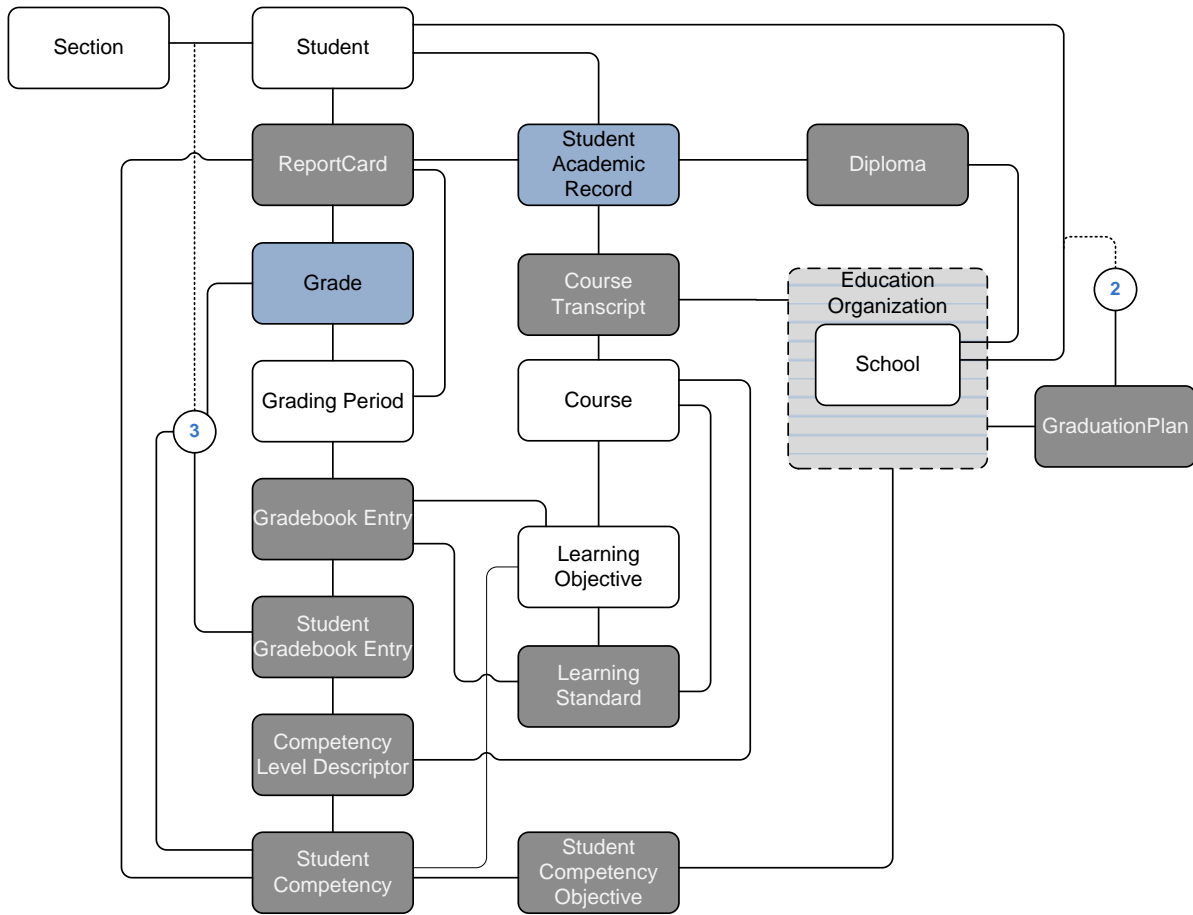
CalendarDate			
Level	Element	Description	Required
1	calendarEvent	The type of scheduled or unscheduled event for the day. For example: Instructional day Teacher only day Holiday Make-up day Weather day Student late arrival/early dismissal ...	Required
1	Date	The month, day and year of the calendar date.	Required

2.2.7 GradingPeriod

This entity represents the time span for which grades are reported.

GradingPeriod			
Level	Element	Description	Required
1	beginDate	Month, day, and year of the first day of the grading period.	Required
1	endDate	Month, day, and year of the last day of the grading period.	Required
1	gradingPeriod	The name of the period for which grades are reported	Required
1	totalInstructionalDays	Total days available for educational instruction during the grading period.	Required
1	calendarDates	Days associated with the grading period.	Optional
2	calendarEvent	The type of scheduled or unscheduled event for the day. For example: Instructional day Teacher only day Holiday Make-up day Weather day Student late arrival/early dismissal ...	Required
2	Date	The month, day and year of the calendar date.	Required

2.3 Academic Record Family Conceptual Data Model



Legend

- Included in this family
- Not part of this family; reference
- Abstract entity
- Base (inheritable) entity
- 3 Number relates to Association
- Not part of NYSED Scope

Figure 2.3 – Conceptual Data Model of Academic Record Family

2.3.1 StudentAcademicRecord

This educational entity represents the cumulative record of academic achievement for a student.

StudentAcademicRecord			
Level	Element	Description	Required
1	cumulativeCreditsAttempted	The cumulative number of credits an individual attempts to earn by taking courses during his or her enrollment in the current school as well as those credits transferred from schools in which the individual had been previously enrolled.	Optional
2	credit	The value of credits or units of value awarded for the completion of a course	Required
1	cumulativeCreditsEarned	The cumulative number of credits an individual earns by completing courses or examinations during his or her enrollment in the current school as well as those credits transferred from schools in which the individual had been previously enrolled.	Optional
2	credit	The value of credits or units of value awarded for the completion of a course	Required
1	cumulativeGradePointAverage	A measure of average performance in all courses taken by an individual during his or her school career as determined for record-keeping purposes. This is obtained by dividing the total grade points received by the total number of credits attempted. This usually includes grade points received and credits attempted in his or her current school as well as those transferred from schools in which the individual was previously enrolled.	Optional

StudentAcademicRecord			
Level	Element	Description	Required
1	gradeValueQualifier	The scale of equivalents, if applicable, for grades awarded as indicators of performance in schoolwork. For example, numerical equivalents for letter grades used in determining a student's Grade Point Average (A=4, B=3, C=2, D=1 in a four-point system) or letter equivalents for percentage grades (90-100%=A, 80-90%=B, etc.).	Optional
1	session	Grades for the classes attended by the student for this grading period.	Required
2	schoolYear	The identifier for the school year.	Required
2	sessionName	The identifier for the calendar for the academic session (e.g., 2010/11, 2011 Summer).	Required
2	term	The term for the session during the school year.	Required
1	student	The student who was enrolled for the session.	Required
2	studentIdentificationCode	A coding scheme that is used for identification and record-keeping purposes by schools, social services, or other agencies to refer to a student.	Optional
3	assigningOrganizationCode	The organization code or name assigning the student Identification Code.	Optional
3	identificationCode	A unique number or alphanumeric code assigned to a student by a school, school system, a state, or other agency or entity.	Required
3	identificationSystem	A coding scheme that is used for identification and record-keeping purposes by schools, social services, or other agencies to refer to a student.	Required

StudentAcademicRecord			
Level	Element	Description	Required
2	studentUniqueStateId	A unique number or alphanumeric code assigned to a student by a state education agency.	Required

2.3.2 Grade

This educational entity represents an overall score or assessment tied to a course over a period of time (i.e., the grading period). Student grades are usually a compilation of marks and other scores.

Grade			
Level	Element	Description	Required
1	gradeType	The type of grade reported (e.g., Exam, Final, Grading Period). For a list of valid values see GradeType in Enumerations Section.	Required
1	letterGradeEarned	A final or interim (grading period) indicator of student performance in a class as submitted by the instructor.	Optional
1	numericGradeEarned	A final or interim (grading period) indicator of student performance in a class as submitted by the instructor.	Optional
1	performanceBaseConversion	A conversion of the level to a standard set of performance levels. For a list of valid values see PerformanceBaseType in Enumerations Section.	Optional
1	gradingPeriod	Identifies the grading period for the grade.	Optional
2	beginDate	Month, day, and year of the first day of the grading period.	Required
2	gradingPeriod	The name of the period for which grades are reported	Required
1	studentSectionAssociation	Association to the student-section association with which the grade is awarded.	Required
2	section	The section the student is enrolled in.	Required
3	uniqueSectionCode	A unique identifier for the section that is defined by the classroom, the subjects taught, and the instructors that are assigned.	Required
2	student	The student enrolled in the section.	Required
3	studentIdentificationCode	A coding scheme that is used for identification and record-keeping purposes by schools, social services, or other agencies to refer to a student.	Optional
4	assigningOrganizationCode	The organization code or name assigning the student Identification Code.	Optional
4	identificationCode	A unique number or alphanumeric code assigned to a student by a school, school system, a	Required

Grade			
Level	Element	Description	Required
		state, or other agency or entity.	
4	identificationSystem	A coding scheme that is used for identification and record-keeping purposes by schools, social services, or other agencies to refer to a student.	Required
3	studentUniqueStateId	A unique number or alphanumeric code assigned to a student by a state education agency.	Required

2.4 Assessment Family Conceptual Data Model

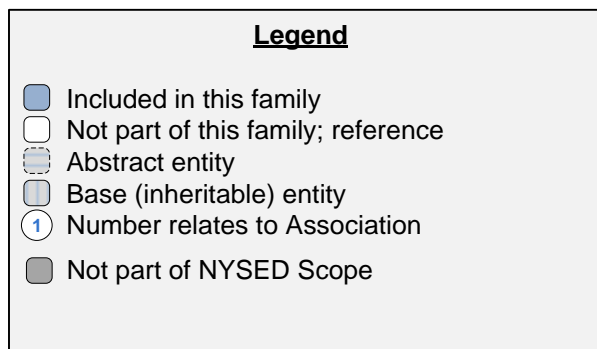
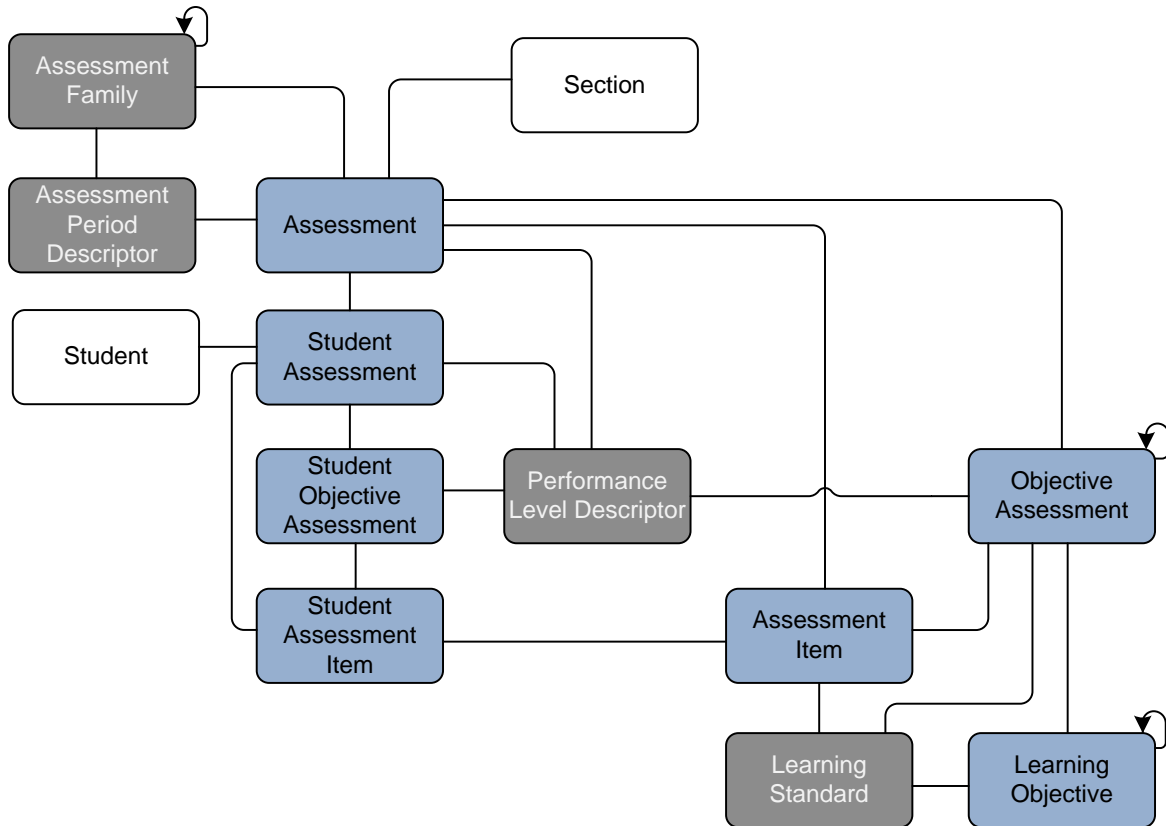


Figure 2.4 – Conceptual Data Model of Assessment Family

2.4.1 Assessment

This entity represents a tool, instrument, process, or exhibition composed of a systematic sampling of behavior for measuring a student's competence, knowledge, skills or behavior. An assessment can be used to measure differences in individuals or groups and changes in performance from one occasion to the next.

Assessment			
Level	Element	Description	Required
1	academicSubject	The content or subject area of an assessment, such as arts, mathematics, reading, stenography, or a foreign language. For a list of valid values see AcademicSubjectType in Enumerations Section.	Optional
1	assessmentCategory	The category of an assessment based on format and content, such as "Achievement test," "Advanced placement test," "Alternate assessment/grade-level standards," "Attitudinal test," and "Cognitive and perceptual skills test."	Optional
1	assessmentFamilyHierarchyName	A hierarchical name for the assessment using '.' separators.	Optional
1	assessmentIdentificationCode	A unique number or alphanumeric code assigned to an assessment by a school, school system, a state, or other agency.	Required
2	assigningOrganizationCode	The organization code or name assigning the assessment identification code.	Optional
2	ID	A unique number or alphanumeric code assigned to an assessment by a school, school system, a state, or other agency or entity.	Required
2	identificationSystem	A coding scheme that is used for identification and record-keeping purposes by schools, social services, or other agencies to refer to an assessment.	Required
1	assessmentPerformanceLevel	Definition of the performance levels and the associated cut scores. Three styles are supported: (1) specification of performance level by min and max score, (2) specification of performance level by cut score - min only, and (3) specification of performance level without any mapping to scores.	Optional
2	assessmentReportingMethod	The method that the administrator of the assessment uses to report the performance and achievement of all students. It may be a qualitative method such as performance level descriptors or a quantitative method such as a numerical grade or cut score. More than one type of reporting method may be used.. For a list of valid values see See AssessmentReportingMethodType in Enumerations Section.	Required
2	maximumScore	The maximum score to make the indicated level of performance.	Optional
2	minimumScore	The minimum score required to make the indicated level of performance.	Optional
2	performanceLevelDescriptor	The performance level(s) defined for the assessment.	Required
3	codeValue	A code or abbreviation that is used to refer to a Performance Level,	Required

Assessment			
Level	Element	Description	Required
1	assessmentTitle	The title or name of the assessment.	Required
1	contentStandard	Identifier for whether an assessment conforms to a standard. Examples include "Local standard," "Statewide standard," "Regional standard," "Association standard," and "School standard." <i>For a list of valid values see ContentStandardType in Enumerations Section.</i>	Optional
1	gradeLevelAssessed	The grade level this assessment is most typically associated with. If it spans multiple grade levels, this should be the highest grade level for the assessment, and the lowest grade level is provided in the "lowestGradeLevelAssessed" attribute. Examples include "Adult," "Prekindergarten," "First Grade," "Second Grade," and so on. <i>For a list of valid values see GradeLevelType in Enumerations Section.</i>	Optional
1	lowestGradeLevelAssessed	The lowest grade assessed when the assessments spans a range of grade levels (see "gradeLevelAssessed"), otherwise omitted. Examples include "Adult," "Prekindergarten," "First Grade," "Second Grade," and so on. <i>For a list of valid values see GradeLevelType in Enumerations Section.</i>	Optional
1	revisionDate	The month, day, and year that the conceptual design for the assessment had its most recent substantial revision.	Optional
1	version	The version identifier for the assessment.	Optional

2.4.2 PerformanceLevelDescriptor

PerformanceLevelDescriptor			
Level	Element	Description	Required
1	codeValue	A code or abbreviation that is used to refer to a Performance Level,	Required
1	Description	The description of the Performance Level, for example. Passing Standard Commended	Required

2.4.3 StudentAssessmentAssociation

This entity represents the analysis or scoring of a student's response on an assessment. The analysis results in a value that represents a student's performance on a set of items on a test.

StudentAssessmentAssociation			
Level	Element	Description	Required
1	administrationDate	The month(s), day(s), and year on which an assessment is administered or first day of administration if over multiple days.	Required
1	administrationEndDate	Assessment Administration End Date, if administered over multiple days.	Optional
1	administrationLanguage	The language in which an assessment is written and/or administered.	Optional
1	gradeLevelWhenAssessed	The grade level of a student when assessed. For a list of valid values see GradeLevelType in Enumerations Section.	Optional
1	performanceLevelDescriptors	This descriptor defines various levels or thresholds for performance on the assessment.	Optional
2	codeValue	A code or abbreviation that is used to refer to a Performance Level,	Required
1	scoreResults	A meaningful score or statistical expression of the performance of an individual. The results can be expressed as a number, percentile, range, level, etc.	Optional
2	assessmentReportingMethod	The method that the administrator of the assessment uses to report the performance and achievement of all students. It may be a qualitative method such as performance level descriptors or a quantitative method such as a numerical grade or cut score. More than one type of reporting method may be used. For a list of valid values see AssessmentReportingMethodType in Enumerations Section.	Required
2	result	The value of a meaningful raw score or statistical expression of the performance of an individual. The results can be expressed as a number, percentile, range, level, etc.	Required
1	serialNumber	The unique number for the assessment form or answer document.	Optional
1	specialAccommodations	The specific type of special variation used in how an examination is presented, how it is administered, or how the test taker is allowed to respond. This generally refers to changes that do not substantially alter what the examination measures. The proper use of accommodations does not substantially change academic level or performance criteria. For example: Braille Enlarged monitor view Extra time Large Print Setting Oral Administration ...	Optional
1	assessment	Reference to the assessment taken by the student.	Required
1	Student	Reference to the student associated with the assessment.	Required
2	studentIdentificationCode	A coding scheme that is used for identification and record-keeping purposes by schools, social services, or other agencies to refer to a student.	Optional
3	assigningOrganizationCode	The organization code or name assigning the student Identification Code.	Optional
3	identificationCode	A unique number or alphanumeric code assigned to a student by a school, school system, a state, or other agency or entity.	Required
3	identificationSystem	A coding scheme that is used for identification and record-keeping purposes by schools, social services, or other agencies to refer to a student.	Required
2	studentUniqueStateId	A unique number or alphanumeric code assigned to a student by a state education agency.	Required

2.4.4 StudentObjectiveAssessment

This entity holds the score and or performance levels earned for an objective assessment by a student.

StudentObjectiveAssessment			
Level	Element	Description	Required
1	objectiveAssessment	This entity represents subtests that assess specific learning objectives.	Required
2	identificationCode	A unique number or alphanumeric code assigned to a space, room, site, building, individual, organization, program, or institution by a school, school system, a state, or other agency or entity.	Required
1	performanceLevelDescriptors	This descriptor defines various levels or thresholds for performance on the assessment.	Optional
2	codeValue	A code or abbreviation that is used to refer to a Performance Level,	Required
1	scoreResults	A meaningful score or statistical expression of the performance of an individual. The results can be expressed as a number, percentile, range, level, etc.	Required
2	assessmentReportingMethod	The method that the administrator of the assessment uses to report the performance and achievement of all students. It may be a qualitative method such as performance level descriptors or a quantitative method such as a numerical grade or cut score. More than one type of reporting method may be used. For a list of valid values see AssessmentReportingMethodType in Enumerations Section.	Required
2	Result	The value of a meaningful raw score or statistical expression of the performance of an individual. The results can be expressed as a number, percentile, range, level, etc.	Required

2.4.5 StudentAssessmentItem

This entity represents the student's response to an assessment item and the item-level scores such as correct, incorrect, or met standard.

StudentAssessmentItem			
Level	Element	Description	Required
1	assessmentItem	The AssessmentItem to which this studentAssessmentItem is a response to.	Required
2	identificationCode	A unique number or alphanumeric code assigned to a space, room, site, building, individual, organization, program, or institution by a school, school system, a state, or other agency or entity.	Required
1	assessmentItemResult	The analyzed result of a student's response to an assessment item.. For example: Correct	Required

StudentAssessmentItem			
Level	Element	Description	Required
		Incorrect Met standard ...	
1	assessmentResponse	A student's response to a stimulus on a test.	Optional
1	rawScoreResult	A meaningful raw score of the performance of an individual on an assessment item.	Optional
1	responseIndicator	Indicator of the response. For example: Nonscorable response Ineffective response Effective response Partial response ...	Optional

2.4.6 ObjectiveAssessment

This entity represents subtests that assess specific learning objectives.

ObjectiveAssessment			
Level	Element	Description	Required
1	assessmentPerformanceLevel	Definition of the performance levels and the associated cut scores. Three styles are supported: 1. Specification of performance level by min and max score 2. Specification of performance level by cut score - min only 3. Specification of performance level without any mapping to scores	Optional
2	assessmentReportingMethod	The method that the administrator of the assessment uses to report the performance and achievement of all students. It may be a qualitative method such as performance level descriptors or a quantitative method such as a numerical grade or cut score. More than one type of reporting method may be used. For a list of valid values see AssessmentReportingMethodType in Enumerations Section.	Required
2	maximumScore	The maximum score to make the indicated level of performance.	Optional
2	minimumScore	The minimum score required to make the indicated level of performance.	Optional
2	performanceLevelDescriptor	The performance level(s) defined for the assessment.	Required
3	codeValue	A code or abbreviation that is used to refer to a Performance Level,	Required
1	identificationCode	A unique number or alphanumeric code assigned to a space, room, site, building, individual, organization, program, or institution by a school, school system, a state, or other agency or entity.	Required
1	maxRawScore	The maximum raw score achievable across all assessment items that are correct and scored at the maximum.	Optional
1	nomenclature	Reflects the specific nomenclature used for this level of ObjectiveAssessment.	Optional

ObjectiveAssessment			
Level	Element	Description	Required
1	objectiveAssessments	Subsets of the assessment that address specific learning objectives.	Optional
2	identificationCode	A unique number or alphanumeric code assigned to a space, room, site, building, individual, organization, program, or institution by a school, school system, a state, or other agency or entity.	Required
	percentOfAssessment	The percent of the assessment that tests this objective.	Optional
1	learningObjectivess	References to a learning objective	Optional
2	learningObjectiveId	The Identifier for the specific learning objective in the context of a standard (e.g., 111.15.3.1.A)	Optional
3	contentStandardName	The name of the content standard from which the learning standard was derived.	Optional
3	identificationCode	A unique number or alphanumeric code assigned to a learning Standard.	Required

2.4.7 AssessmentItem

This entity represents one of many single measures that make up an assessment.

AssessmentItem			
Level	Element	Description	Required
1	correctResponse	The correct response for the assessment item.	Required
1	identificationCode	A unique number or alphanumeric code assigned to a space, room, site, building, individual, organization, program, or institution by a school, school system, a state, or other agency or entity.	Required
	itemCategory	Category or type of the assessment item. For example: Multiple choice Analytic Prose ...	Required
1	learningStandardId	Learning Standard tested by this item.	Optional
2	contentStandardName	The name of the content standard from which the learning standard was derived.	Optional
2	identificationCode	A unique number or alphanumeric code assigned to a learning Standard.	Required

2.4.8 LearningObjective

This entity represents identified learning objectives for courses in specific grades.

Learning Objective			
Level	Element	Description	Required
1	academicSubject	The description of the content or subject area (e.g., arts, mathematics, reading, stenography, or a foreign language) of an assessment. For a list of valid values see AcademicSubjectType in Enumerations Section.	Required
1	Description	The description of the learning objective.	Optional
1	learningObjectiveId	The Identifier for the specific learning objective in the context of a standard (e.g., 111.15.3.1.A)	Optional
2	contentStandardName	The name of the content standard from which the learning standard was derived.	Optional
2	identificationCode	A unique number or alphanumeric code assigned to a learning Standard.	Required
1	objective	The designated title of the learning objective.	Required
1	objectiveGradeLevel	The grade level for which the learning objective is targeted, For a list of valid values see GradeLevelType in Enumerations Section.	Required
1	learningStandards	Learning standard(s) included in this objective.	Optional
2	learningStandardId	The Identifier for the specific learning standard (e.g., 111.15.3.1.A)	Required
3	contentStandardName	The name of the content standard from which the learning standard was derived.	Optional
3	identificationCode	A unique number or alphanumeric code assigned to a learning Standard.	Required
1	parentLearningObjective	Parent learning objective this is a sub-objective for.	Optional
2	learningObjectiveId	The Identifier for the specific learning objective in the context of a standard (e.g., 111.15.3.1.A)	Optional
2	learningObjectiveId	The Identifier for the specific learning objective in the context of a standard (e.g., 111.15.3.1.A)	Optional
3	contentStandardName	The name of the content standard from which the learning standard was derived.	Optional
3	identificationCode	A unique number or alphanumeric code assigned to a learning Standard.	Required
2	objective	The designated title of the learning objective.	Required

2.5 Program & Cohort Family Conceptual Data Model

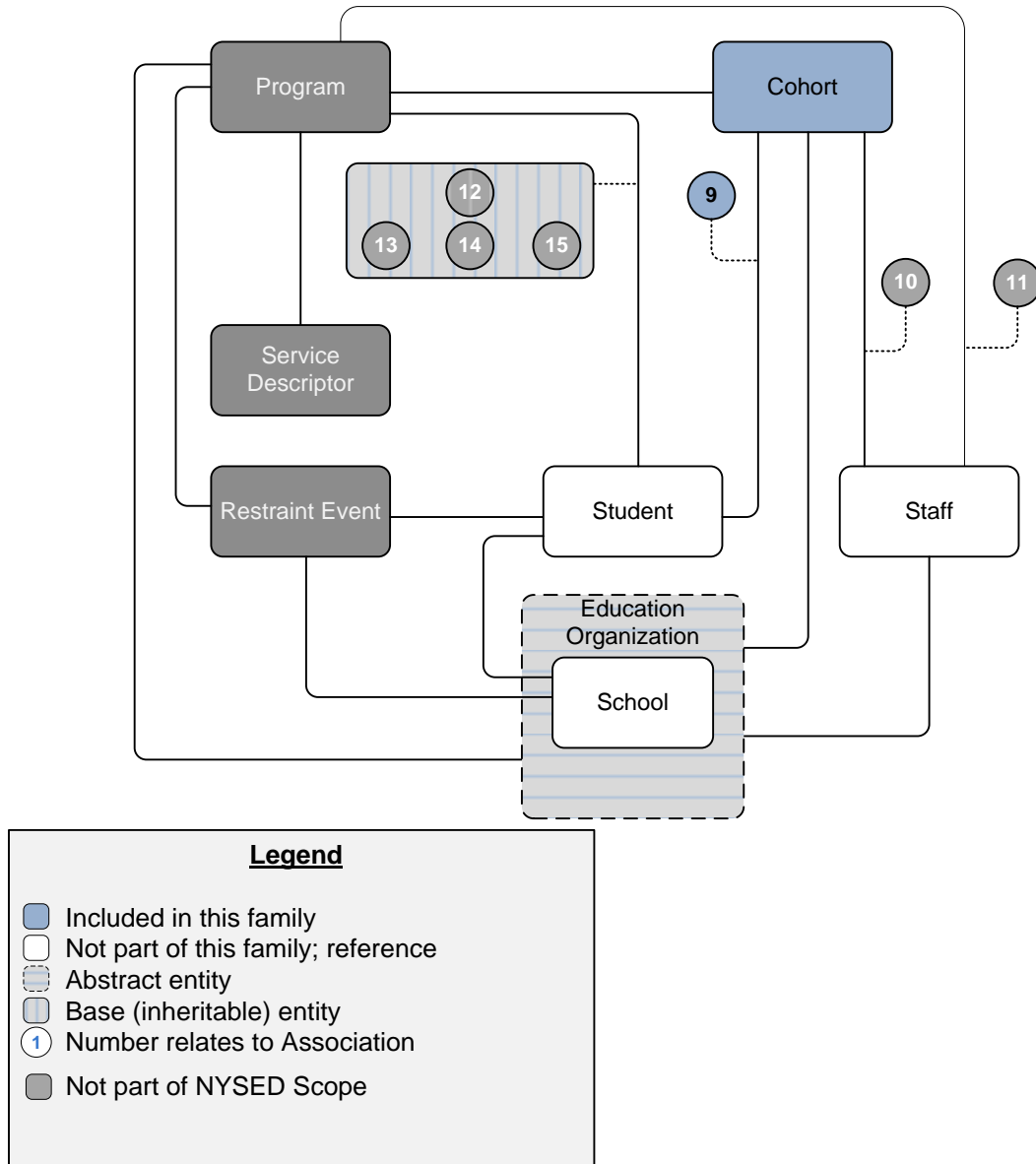


Figure 2.5- Conceptual Data Model of Program & Cohort Family

2.5.1 Cohort

This entity represents any type of list of designated students for tracking, analysis, or intervention.

Cohort			
Level	Element	Description	Required
1	cohortDescription	The description of the cohort and its purpose.	Optional
1	cohortIdentifier	The name or ID for the cohort.	Required
1	cohortType	The type of cohort (e.g., academic intervention, classroom breakout) For a list of valid values see Cohort Type in Enumerations Section.	Required
1	educationOrg	The education organization associated with and owner of the cohort.	Required
2	educationOrgIdentificationCode	A unique number or alphanumeric code assigned to an education organization by a school, school system, a state, or other agency or entity.	Optional
3	ID	A unique number or alphanumeric code that is assigned to an education organization by a school, school system, a state, or other agency or entity.	Required
3	identificationSystem	The school system, state, or agency assigning the identification code.	Required
2	stateOrganizationId	The identifier assigned to an education organization by the State Education Agency (SEA).	Required

2.5.2 StudentCohortAssociation

This association represents the cohort(s) that a student is designated for.

StudentCohortAssociation			
Level	Element	Description	Required
1	beginDate	The month, day, and year on which the student was first identified as part of the cohort.	Required
1	endDate	The month, day, and year on which the student was removed as part of the cohort.	Optional
1	Cohort	Reference to the cohort associated with the student.	Required
2	cohortIdentifier	The name or ID for the cohort.	Required
1	Student	The student associated with the cohort.	Required
2	studentIdentificationCode	A coding scheme that is used for identification and record-keeping purposes by schools, social services, or other agencies to refer to a student.	Optional
3	assigningOrganizationCode	The organization code or name assigning the student Identification Code.	Optional
3	identificationCode	A unique number or alphanumeric code assigned to a student by a school, school system, a state, or other agency or entity.	Required

StudentCohortAssociation			
Level	Element	Description	Required
3	identificationSystem	A coding scheme that is used for identification and record-keeping purposes by schools, social services, or other agencies to refer to a student.	Required
2	studentUniqueStateId	A unique number or alphanumeric code assigned to a student by a state education agency.	Required

3. ENUMERATIONS

All enumerations in inBloom, are derived from the W3C data type token.

3.1 AcademicSubjectType

The description of the content or subject area (e.g., arts, mathematics, reading, stenography, or a foreign language) of an assessment.

- Agriculture, Food, and Natural Resources
- Architecture and Construction
- Business and Marketing
- Career Education
- Communication and Audio/Visual Technology
- Computer and Information Sciences
- ELA
- Engineering and Technology
- Fine and Performing Arts
- Foreign Language and Literature
- Health Care Sciences
- Hospitality and Tourism
- Human Services
- Manufacturing
- Mathematics
- Military Science
- Miscellaneous
- Physical, Health, and Safety Education
- Public, Protective, and Government Service
- Religious Education and Theology
- Science
- Social Sciences and History
- Social Studies
- Transportation, Distribution and Logistics

3.2 AddressType

The type of address listed for an individual or organization..

- Mailing
- Physical

3.3 AssessmentReportingMethodType

The method that the instructor of the class uses to report the performance and achievement of all students. It may be a qualitative method such as individualized teacher comments or a quantitative method such as a letter or a numerical grade. In some cases, more than one type of reporting method may be used

- Letter grade/mark

- Normalized standard score
- Not applicable
- Number score
- Other
- Raw score
- Scale score

3.4 AttendanceEventCategoryType

A code categorizing the attendance event (e.g., excused absence, unexcused absence).

- Excused Absence
- In-school Suspension
- Out-of-School Suspension
- Tardy
- Unexcused Absence

3.5 ContentStandardType

An indication as to whether an assessment conforms to a standard. For example: Local standard
Statewide standard Regional standard Association standard School standard

- ACT
- Advanced Placement
- International Baccalaureate
- Other
- SAT
- State Standard

3.6 CountryCodeType

The names of countries. (Note: A list of countries and codes is currently maintained and updated by the ISO as ISO 3166 on its website: http://www.iso.org/iso/country_codes.htm)

Country	Country Code
Afghanistan	AF
Aland Islands	AX
Albania	AL
Algeria	DZ
American Samoa	AS
Andorra	AD
Angola	AO
Anguilla	AI
Antarctica	AQ
Antigua and Barbuda	AG
Argentina	AR
Armenia	AM

Country	Country Code
Aruba	AW
Australia	AU
Austria	AT
Azerbaijan	AZ
Bahamas	BS
Bahrain	BH
Bangladesh	BD
Barbados	BB
Belarus	BY
Belgium	BE
Belize	BZ
Benin	BJ
Bermuda	BM
Bhutan	BT
Bolivia	BO
Bonaire, Sint Eustatius and Saba	BQ
Bosnia and Herzegovina	BA
Botswana	BW
Bouvet Island	BV
Brazil	BR
British Indian Ocean Territory	IO
Brunei Darussalam	BN
Bulgaria	BG
Burkina Faso	BF
Burundi	BI
Cambodia	KH
Cameroon	CM
Canada	CA
Cape Verde	CV
Cayman Islands	KY
Central African Republic	CF
Chad	TD
Chile	CL
China	CN
Christmas Island	CX
Cocos (Keeling) Islands	CC
Colombia	CO
Comoros	KM
Congo	CG
Congo, The Democratic Republic of the	CD

Country	Country Code
Cook Islands	CK
Costa Rica	CR
Cote D Ivoire	CI
Croatia	HR
Cuba	CU
Curacao	CW
Cyprus	CY
Czech Republic	CZ
Denmark	DK
Djibouti	DJ
Dominica	DM
Dominican Republic	DO
Ecuador	EC
Egypt	EG
El Salvador	SV
Equatorial Guinea	GQ
Eritrea	ER
Estonia	EE
Ethiopia	ET
Falkland Islands (Malvinas)	FK
Faroe Islands	FO
Fiji	FJ
Finland	FI
France	FR
French Guiana	GF
French Polynesia	PS
French Southern Territories	TF
Gabon	GA
Gambia	GM
Georgia	GE
Germany	DE
Ghana	GH
Gibraltar	GI
Greece	GR
Greenland	GL
Grenada	GD
Guadeloupe	GP
Guam	GU
Guatemala	GT
Guernsey	GG
Guinea	GN
Guinea-Bissau	GW

Country	Country Code
Guyana	GY
Haiti	HT
Heard Island and McDonald Islands	HM
Holy See (Vatican City State)	VA
Honduras	HN
Hong Kong	HK
Hungary	HU
Iceland	IS
India	IN
Indonesia	ID
Iran, Islamic Republic of	IR
Iraq	IQ
Ireland	IE
Isle of Man	IM
Israel	IL
Italy	IT
Jamaica	JM
Japan	JP
Jersey	JE
Jordan	JO
Kazakhstan	KZ
Kenya	KE
Kiribati	KI
Korea, Democratic People's Republic of	KP
Korea, Republic of	KR
Kuwait	KW
Kyrgyzstan	KG
Lao People's Democratic Republic	LA
Latvia	LV
Lebanon	LB
Lesotho	LS
Liberia	LR
Libyan Arab Jamahiriya	LY
Liechtenstein	LI
Lithuania	LT
Luxembourg	LU
Macao	MR
Macedonia	MN
Madagascar	MG

Country	Country Code
Malawi	MZ
Malaysia	NE
Maldives	MY
Mali	ML
Mali	MO
Malta	MW
Marshall Islands	MM
Martinique	MT
Mauritania	MU
Mauritius	MX
Mayotte	YT
Mexico	NA
Micronesia, Federated States of	FM
Moldova, Republic of	MD
Monaco	MC
Mongolia	MQ
Montenegro	ME
Montserrat	MV
Morocco	MA
Mozambique	NG
Myanmar	MP
Namibia	NI
Nauru	PG
Nepal	NP
Nepal	PF
Netherlands	PA
Netherlands Antilles	AN
New Caledonia	NC
New Caledonia	NO
New Zealand	PK
Nicaragua	OM
Niger	NR
Nigeria	NZ
Niue	PH
Norfolk Island	NF
Norfolk Island	NU
Northern Mariana Islands	MS
Norway	PE
Oman	PL
Pakistan	PY
Panama	PN
Papua New Guinea	PT

Country	Country Code
Peru	PR
Philippines	PW
Pitcairn	RO
Poland	QA
Puerto Rico	RU
Russian Federation	RW
Rwanda	SA
Saint Barthelemy	BL
Saint Helena	SI
Saint Kitts and Nevis	KN
Saint Lucia	LC
Saint Martin (French Part)	MF
Saint Martin (French Part)	MH
Saint Pierre and Miquelon	PM
Saint Pierre and Miquelon	RE
Saint Vincent and the Grenadines	VC
Samoa	WS
San Marino	SM
Sao Tome and Principe	ST
Saudi Arabia	SB
Senegal	SN
Serbia and Montenegro	CS
Seychelles	SD
Sierra Leone	SL
Singapore	SH
Sint Maarten (Dutch Part)	SX
Slovakia	SK
Solomon Islands	SC
Somalia	SO
South Africa	ZA
South Georgia and South Sandwich Islands	GS
South Sudan	SS
Spain	ES
Sri Lanka	LK
Sudan	SE
Suriname	SR
Svalbard and Jan Mayen	SJ
Swaziland	SZ
Sweden	SG
Switzerland	CH
Syrian Arab Republic	SY

Country	Country Code
Taiwan, Province of China	TW
Tajikistan	TJ
Tanzania, United Republic of	TZ
Thailand	TH
Timor-Leste	TL
Togo	TG
Tokelau	TK
Tonga	TO
Trinidad and Tobago	TT
Tunisia	TN
Turkey	TR
Turkmenistan	TM
Turks and Caicos Islands	TC
Tuvalu	TV
Uganda	UG
Ukraine	UA
United Arab Emirates	AE
United Kingdom	GB
United States	US
United States Minor Outlying Islands	UM
Uruguay	UY
Uzbekistan	UZ
Vanuatu	VU
Venezuela	VE
Vietnam	VN
Virgin Islands, British	VG
Virgin Islands, U.S.	VI
Wallis and Futuna	WF
Western Sahara	EH
Yemen	YE
Zambia	ZM
Zimbabwe	ZW

3.7 DisabilityType

A disability condition that describes a child's impairment

- Autistic/Autism
- Deaf-Blindness
- Deafness
- Emotional Disturbance
- Hearing/Auditory Impairment

- Infants and Toddlers with Disabilities
- Mental Retardation
- Multiple Disabilities
- Orthopedic Impairment
- Other Health Impairment
- Specific Learning Disability
- Speech or Language Impairment
- Traumatic Brain Delay
- Visual Impairment

3.8 ElectronicMailAddressType

The type of email listed for an individual or organization.

- Home/Personal
- Organization
- Work

3.9 EntryType

The process by which a student enters a school during a given academic session.

- Other

3.10 ExitWithdrawType

The circumstances under which the student exited from membership in an educational institution

- Completed school with other credentials
- Completed with a state-recognized equivalency certificate
- Died or is permanently incapacitated
- Dropout
- End of school year
- Enrolled in a postsecondary early admission program, eligible to return
- Expelled or involuntarily withdrawn
- Graduated with regular, advanced, International Baccalaureate, or other type of diploma
- Incarcerated in a state jail or federal penitentiary as an adult
- Reached maximum age for services
- Student is in a different public school in the same local education agency
- Transferred to a private, religiously-affiliated school in the same local education agency
- Transferred to a public school in a different local education agency in the same state
- Transferred to a public school in a different state
- Transferred to a school outside of the country
- Transferred to home schooling

- Ended enrollment for instructional reporting only
- Transferred to an approved GED program outside this district
- Special education eligibility status determined or determination process stopped for any reason
- Transferred to homebound instruction provided by this district
- Transferred to high school equivalency program
- Transferred to other high school equivalency (GED) preparation program
- Transferred outside district by court order
- Left school: first-time dropout
- Left school: previously counted as a dropout
- Long-term absence
- Leaving a school under NCLB - a victim of a serious violent incident
- Leaving a NYC community district under NCLB - a victim of a serious violent incident
- Entry into a different grade in the same school building
- End Walk-in Enrollment
- End Special Education Responsibility only
- Re-enroll in same school

3.11 GenerationCodeSuffixType

An appendage, if any, used to denote an individual's generation in his family (e.g., Jr., Sr., III).

- II
- III
- IV
- Jr
- Sr
- V
- VI
- VII
- VIII

3.12 GradeLevelType

The enumeration items for the set of grade levels.

- Eighth grade
- Eleventh grade
- Fifth grade
- First grade
- Fourth grade
- Kindergarten
- Ninth grade
- Other
- Preschool/ Prekindergarten
- Second grade

- Seventh grade
- Sixth grade
- Tenth grade
- Third grade
- Twelfth grade
- Ungraded

3.13 GradeType

The type of grade in a report card or transcript (e.g., Final, Exam, Grading Period,)

- Final

3.14 OldEthnicityType

Previous definition of Ethnicity combining Hispanic/Latino and Race

- American Indian or Alaskan Native
- Asian or Pacific Islander
- Black, not of Hispanic origin
- Hispanic
- White, not of Hispanic origin
- Mulit-racial
- Asian or Pacific Islander

3.15 OperationalStatusType

The current operational status of the education organization (e.g., active, inactive)

- Active
- Added
- Changed Agency
- Closed
- Inactive
- New

3.16 PerformanceBaseType

Defines standard levels of competency or performance that can be used for dashboard visualizations: advanced, proficient, basic, below basic

- Fail
- Pass

3.17 PersonalTitlePrefixType

A prefix used to denote the title, degree, position or seniority of the person.

- Colonel
- Dr
- Mr
- Mrs
- Ms
- Reverend
- Sister
- Sr

3.18 RaceItemTypes

The enumeration items defining the racial categories which most clearly reflects the individual's recognition of his or her community or with which the individual most identifies.

- Asian
- Black - African American
- Native Hawaiian - Pacific Islander
- White

3.19 RelationType

The nature of an individual's relationship to a student.

- Adopted daughter
- Adopted son
- Adoptive parents
- Advisor
- Agency representative
- Aunt
- Brother, half
- Brother, natural/adoptive
- Brother, step
- Brother-in-law
- Court appointed guardian
- Cousin
- Daughter
- Daughter-in-law
- Dependent
- Employer
- Family member
- Father, foster
- Father, step
- Father-in-law
- Father's significant other

- Fiance
- Fiancee
- Former husband
- Former wife
- Foster daughter
- Foster parent
- Foster son
- Friend
- Granddaughter
- Grandson
- Great aunt
- Great uncle
- Husband
- Life partner
- Life partner of parent
- Minister or priest
- Mother, foster
- Mother, step
- Mother-in-law
- Mother's significant other
- Nephew
- Niece
- None
- Other
- Partner of parent
- Probation officer
- Sister, half
- Sister, natural/adoptive
- Sister, step
- Sister-in-law
- Son
- Son-in-law
- Stepdaughter
- Stepson
- Uncle
- Ward
- Wife
- Father
- Grandfather
- Grandmother
- Mother
- Partner

3.20 SexType

A person's gender.

- Female
- Male

3.21 StateAbbreviation

The abbreviation for the state (within the United States) or outlying area in which an address is located.

State Name	Abbreviation
Alaska	AK
Alabama	AL
Arkansas	AR
America Somoa	AS
Arizona	AZ
California	CA
Colorado	CO
Connecticut	CT
District of Columbia	DC
Delaware	DE
Florida	FL
Georgia	GA
Guam	GU
Hawaii	HI
Iowa	IA
Idaho	ID
Illinois	IL
Indiana	IN
Kansas	KS
Kentucky	KY
Louissiana	LA
Massachussets	MA
Maryland	MD
Maine	ME
Michigan	MI
Minesota	MN
Montana	MO
Mississippi	MS
Montana	MT
North Carolina	NC
North Dakota	ND
Nebraska	NE

State Name	Abbreviation
New Hampshire	NH
New Jersey	NJ
New Mexico	NM
Nevada	NV
New York	NY
Ohio	OH
Oklahoma	OK
Oregon	OR
Pennsylvania	PA
Puerto Rico	PR
Rhode Island	RI
South Carolina	SC
South Dakota	SD
Tennessee	TN
Texas	TX
Utah	UT
Virginia	VA
Virgin Islands	VI
Vermont	VT
Washington	WA
Wisconsin	WI
West Virginia	WV
Wyoming	WY
Federated States Of Micronesia	FM
Marshall Islands	MH
Northern Mariana Islands	MP
Palau	PW

3.22 TermType

The type of the session during the school year (e.g., Fall Semester).

- Term 0
- Term1
- Term 2
- Term 3
- Term 4
- Term 5
- Term 6
- Term 7
- Term 8

3.23 TelephoneNumberType

The type of communication number listed for an individual.

- Home
- Mobile
- Work

4. YEARS OF DATA LOADED

INTERCHANGE	ENTITY	Years of Data
EducationOrganization	State	
	LocalEducationAgency	
	School	
StaffAssociation	Teacher	2012 thru 2013
	Staff	2012 thru 2013
	STAFF_ORGASSIGNMENTASSN TEACH	2012 thru 2013
	StaffEdOrganizationAssignAssociation	2012 thru 2013
	TeacherSchoolAssociation	2013
	TeacherSectionAssociation	2012 thru 2013
MasterSchedule	CalendarDate	2012 thru 2013
	Course	2012 thru 2013
	CourseOffering	2012 thru 2013
	Section	2012 thru 2013
	Session	2012 thru 2013
	ClassPeriod	2012 thru 2013
StudentParent	Parent	2013
	Student	2013
StudentEnrollment	StudentSchoolAssociation	2006 thru 2013
	StudentSectionAssociation	2012 thru 2013
AssessmentMetaData	Assessment	2000 thru 2013
	LearningStandard	2012
	AssessmentItem	2012
StudentAssessment	StudentAssessment	2000 thru 2013
	StudentAssessmentItem	2012
StudentCohort	Cohort	2007-2013
StudentAttendance	AttendanceEvent	2013
StudentGrade	Grade	2012-2013